

NOTE :
 SHADED AREA DEEDED FOR
 WALKWAY PURPOSES. THIS
 PLAN SUPERSEDES ALL
 PREVIOUSLY COMPLETED MAPS.

PLAT OF

FENNER STREET

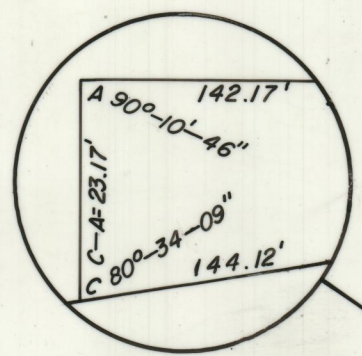
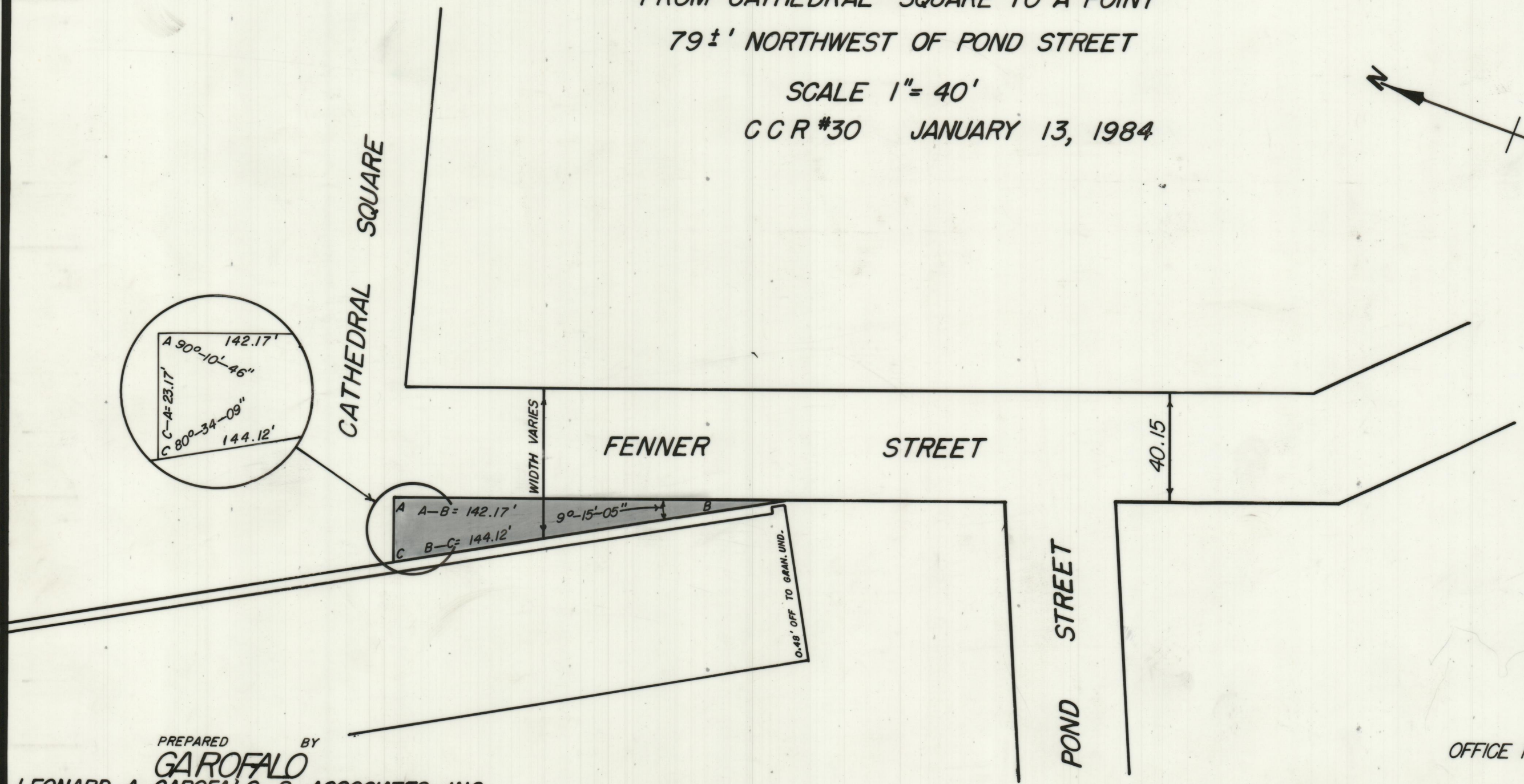
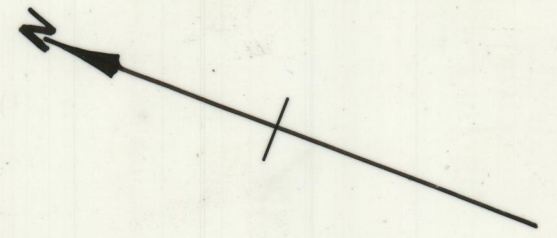
WIDENING-PUBLIC WALKWAY

FROM CATHEDRAL SQUARE TO A POINT
 79±' NORTHWEST OF POND STREET

SCALE 1" = 40'

CCR #30 JANUARY 13, 1984

PROVIDENCE R I
 P. W. DEPT. - ENGINEERING OFFICE
 STREET LINE SECTION
 File No. 064264
 Date 11-3-83



PREPARED BY
GAROFALO
 LEONARD A. GAROFALO & ASSOCIATES, INC.
 ENGINEERS / SURVEYORS / PLANNERS
 SUITE 4A, 101 DYER STREET
 PROVIDENCE, R.I. 02903
 DATE: JANUARY 5, 1981

OFFICE NO. 27330
 DRAWER 89
 SHEET B-27